

WYTHE COUNTY REQUESTED EXPENDITURE BUDGET FY 2016

Department Summary

March 6, 2015

| | | Spent FY 13 | Spent FY 14 | Approved FY 15 | Requested FY16 |
|--------------------------|------------------------------------|----------------|----------------|-------------------|----------------|
| OPERATIONS BUDGET | | | | | |
| 1101 | BOARD OF SUPERVISORS | 254,996 | 192,515 | 168,695 | 292,865 |
| 1202 | COUNTY ADMIN OFFICE | 383,574 | 394,997 | 418,713 | 427,467 |
| 1204 | FINANCIAL ADMINISTRATION | 228,830 | 228,677 | 235,866 | 249,616 |
| 1205 | TECHNOLOGY | 93,360 | 101,447 | 109,201 | 116,240 |
| 1206 | PUBLIC INFORMATION | 45,381 | 45,928 | 50,906 | 51,614 |
| 1209 | COMMISSIONER OF REVENUE | 249,947 | 255,956 | 272,004 | 281,002 |
| 12091 | MAPPING | 8,084 | 24,353 | 16,200 | 32,300 |
| 1210 | ASSESSORS | 1,793 | 0 | 0 | 240,000 |
| 1213 | TREASURER | 331,302 | 324,055 | 344,546 | 376,671 |
| 1221 | LEGAL | | 0 | 104,600 | 0 |
| 1301 | ELECTORAL BOARD | 34,656 | 27,155 | 41,602 | 52,002 |
| 1302 | REGISTRAR | 77,527 | 80,621 | 85,290 | 87,464 |
| 2101 | CIRCUIT COURT | 40,816 | 55,450 | 57,914 | 59,398 |
| 2102 | GENERAL DISTRICT COURT | 8,140 | 6,999 | 10,150 | 10,210 |
| 21021 | J & DR COURT | 5,438 | 5,648 | 9,530 | 13,180 |
| 2103 | MAGISTRATE | 1,572 | 1,198 | 3,130 | 3,130 |
| 2106 | CLERK OF CIRCUIT COURT | 437,756 | 443,997 | 483,375 | 569,058 |
| 2107 | JUROR PAYMENTS | 4,750 | 2,830 | 4,750 | 4,750 |
| 2108 | LAW LIBRARY | 21,576 | 8,949 | 10,100 | 10,800 |
| 2109 | COMMISSIONER OF ACCOUNTS | 7,500 | 5,000 | 5,000 | 7,500 |
| 2201 | COMMONWEALTH'S ATTORNEY | 593,058 | 603,472 | 657,548 | 668,014 |
| 3102 | ENFORCEMENT & TRAFFIC | 2,791,813 | 2,820,656 | 3,069,529 | 3,106,250 |
| 31021 | COPS UNIV HIRING GRANT | 356,959 | 346,579 | 404,107 | 410,934 |
| 31022 | COURTROOM SECURITY | 208,308 | 225,687 | 287,461 | 360,510 |
| 31023 | VSTOP GRANT | 37,574 | 38,448 | 41,024 | 44,506 |
| 31024 | DARE | 53,563 | 53,086 | 63,226 | 68,279 |
| 31025 | COPS IN SCHOOL GRANT | 159,291 | 166,292 | 179,401 | 198,155 |
| 31026 | VICTIM WITNESS ASSISTANCE | 43,570 | 44,871 | 45,910 | 47,050 |
| 31028 | SHERIFF IT | 24,225 | 23,485 | 24,735 | 25,454 |
| 3202 | VOLUNTEER FIRE DEPARTMENT | 225,738 | 34,432 | 65,000 | 86,000 |
| 32021 | BARREN SPRINGS VOL FIRE DEPARTMENT | 59,239 | 58,059 | 65,809 | 84,295 |
| 32022 | IVANHOE VOL FIRE DEPARTMENT | 37,235 | 35,846 | 41,300 | 80,141 |
| 32023 | MAX MEADOWS VOL FIRE DEPARTMENT | 38,279 | 79,420 | 84,089 | 103,005 |
| 32024 | RURAL RETREAT VOL FIRE DEPARTMENT | 36,666 | 39,461 | 41,300 | 41,300 |
| 32025 | SPEEDWELL VOL FIRE DEPARTMENT | 34,219 | 38,588 | 41,300 | 41,300 |
| 32026 | WYTHEVILLE VOL FIRE DEPARTMENT | 36,663 | 108,608 | 111,210 | 111,210 |
| 32031 | LEAD MINES RESCUE SQUAD | 38,637 | 203,910 | 41,300 | 79,175 |
| 32032 | RURAL RETREAT RESCUE SQUAD | 38,634 | 25,525 | 41,300 | 61,110 |
| 32033 | WYTHE COUNTY RESCUE SQUAD | 38,634 | 36,028 | 41,300 | 51,190 |
| 3204 | WYTHE COUNTY EMS | 0 | 0 | 49,061 | 1,381,968 |
| 3301 | CORRECTION & DETENTION | 1,399,610 | 1,386,034 | 1,600,000 | 1,500,000 |
| 3303 | PROBATION OFFICE | 3,219 | 3,332 | 3,250 | 3,250 |
| 3401 | BUILDING INSPECTION | 80,061 | 83,695 | 93,081 | 95,821 |
| 3501 | ANIMAL CONTROL | 120,027 | 121,882 | 148,674 | 192,802 |
| 3503 | MEDICAL EXAMINER | 500 | 420 | 500 | 500 |
| 3504 | E-911 DEPARTMENT | 0 | 0 | 16,494 | 0 |
| 35041 | E-911 WIRELESS GRANT | 27,104 | 30,505 | 35,848 | 32,182 |
| 3505 | OFFICE OF EMERGENCY SVCS | 75,380 | 55,423 | 255,502 | 73,948 |
| 3506 | CONSOLIDATED DISPATCH | 478,001 | 485,901 | 522,604 | 489,779 |
| 4100 | ROAD CONSTRUCTION | 0 | 0 | 2,000,000 | 0 |
| 4203 | REFUSE COLLECTION | 1,359,387 | 1,354,037 | 1,373,112 | 1,426,624 |
| 42031 | DEBRIS COLLECTION | 0 | 12,880 | 81,671 | 81,531 |
| 43041 | LANDFILL BUILDING | 275 | 319 | 782 | 782 |
| 43042 | COURTHOUSE BUILDING | 250,407 | 287,747 | 252,463 | 276,378 |
| 43043 | COUNTY OFFICE BUILDING | 1,119,069 | 513,372 | 601,736 | 1,941,883 |
| 43044 | HEALTH CENTER BUILDING | 1,997 | 503 | 0 | 0 |
| 43045 | LIBRARY BUILDING | 8,549 | 5,001 | 3,404 | 3,404 |
| 43047 | SIXTH STREET BUILDING | 1,173 | 927 | 2,349 | 2,349 |
| 43048 | B&G MAINTENANCE | 55,332 | 62,600 | 63,689 | 72,618 |
| 43049 | SPILLER ANNEX BUILDING | 0 | 175 | 676 | 676 |

WYTHE COUNTY REQUESTED EXPENDITURE BUDGET FY 2016
Department Summary
March 6, 2015

| | | Spent FY 13 | Spent FY 14 | Approved FY 15 | Requested FY16 |
|--------------------------------|---------------------------------------|-------------------|-------------------|-------------------|-------------------|
| OPERATIONS BUDGET | | | | | |
| 43050 | B&G MAINTENANCE BUILDING | 3,932 | 8,954 | 10,400 | 7,900 |
| 43051 | FC EMERGENCY SERV BLDG | 56,526 | 11,473 | 8,135 | 0 |
| 43052 | CONSOLIDATED DISPATCH | 664,573 | 0 | 500 | 0 |
| 4401 | WATER DEPARTMENT | 1,564,975 | 1,610,663 | 2,372,725 | 2,516,087 |
| 44011 | REGIONAL WTP | 557,816 | 550,928 | 0 | 0 |
| 44012 | WATER TRANSMISSION SYSTEM | 2,993,598 | 2,587,007 | 0 | 0 |
| 44013 | NEW RIVER WATER AUTHORITY | 152,804 | 234,708 | 252,852 | 260,702 |
| 44015 | STORMWATER | 0 | 45,977 | 0 | 0 |
| 4402 | WASTEWATER DEPARTMENT | 1,103,276 | 1,090,674 | 1,160,078 | 1,999,104 |
| 44021 | COLLECTION SYSTEM WASTEWATER PROJECTS | 1,121,863 | 109,673 | 0 | 0 |
| 5101 | LOCAL HEALTH DEPARTMENT | 334,538 | 341,000 | 341,000 | 350,465 |
| 5201 | MT ROGERS MENTAL HEALTH | 130,000 | 133,900 | 133,900 | 182,359 |
| 5301 | DEPT OF SOCIAL SERVICES | 6,004,600 | 5,828,641 | 7,055,847 | 6,818,081 |
| 53030 | TAX RELIEF | 0 | 0 | 0 | 0 |
| 5309 | FAMILY RESOURCE CENTER | 3,750 | 3,750 | 3,750 | 3,750 |
| 5401 | DISTRICT III COOPERATIVE | 26,514 | 26,514 | 26,514 | 26,514 |
| 6101 | SCHOOL BOARD | 43,043,118 | 50,103,146 | 41,976,037 | 44,980,000 |
| 61012 | SCHOOL CONSTRUCTION | 0 | 0 | 10,663,716 | 0 |
| 6401 | WYTHEVILLE COMMUNITY COLL | 37,678 | 38,033 | 38,662 | 39,469 |
| 7100 | REGIONAL TOURISM | 81,044 | 39,610 | 74,972 | 75,203 |
| 7105 | RR LAKE SWIMMING POOL | 39,172 | 36,540 | 23,916 | 103,377 |
| 7109 | RECREATION COMMISSION | 144,603 | 110,543 | 157,815 | 162,568 |
| 7110 | RR LAKE CAMPGROUND | 140,583 | 72,632 | 82,359 | 109,666 |
| 7111 | AGER PARK | 26,409 | 6,417 | 22,621 | 17,000 |
| 7130 | SHEFFEY RECREATION CENTER | 0 | 0 | 0 | 29,771 |
| 7302 | WYTHE/GRAYSON REG LIBRARY | 281,150 | 289,584 | 290,750 | 290,750 |
| 8101 | PLANNING COMMISSION | 74,584 | 79,432 | 82,285 | 93,944 |
| 8102 | ENGINEERING | 77,087 | 73,783 | 132,857 | 131,335 |
| 81061 | WYTHE CO PROGRESS PARK | 2,224,904 | 662,639 | 620,881 | 623,013 |
| 8107 | WYTHE COUNTY JOINT IDA | 3,690,095 | 239,024 | 50,000 | 233,395 |
| 8108 | SMALL BUSINESS INCUBATOR | 10,000 | 10,000 | 0 | 10,000 |
| 8109 | SMYTH/WYTHE AIRPORT COMM | 62,000 | 62,000 | 62,000 | 71,223 |
| 8203 | SOIL & WATER DISTRICT | 11,000 | 6,000 | 6,000 | 6,000 |
| 8206 | NEW RIVER HIGHLANDS RCD | 700 | 1,000 | 1,000 | 1,000 |
| 8305 | COOPERATIVE EXTENSION SER | 57,996 | 50,236 | 58,353 | 61,384 |
| 9201 | REVENUE REFUNDS | -284 | 18,699 | 1,000 | 200,000 |
| 9202 | TAX REVENUE REFUNDS | 9,853 | 37,939 | 11,000 | 11,500 |
| 9501 | RESERVE FUND | 0 | 0 | 125,000 | 0 |
| TOTAL OPERATIONS BUDGET | | 76,799,849 | 76,114,101 | 80,730,242 | 75,545,200 |
| CAPITAL BUDGET | | | | | |
| 9000 | CAPITAL PROJECTS - COUNTY | 0 | 0 | 50,000 | 0 |
| 9050 | CAPITAL PROJECTS - WATER | 0 | 0 | 6,369,500 | 0 |
| 9100 | CAPITAL PROJECTS - WASTEWATER | 0 | 0 | 2,103,600 | 0 |
| TOTAL CAPITAL BUDGET | | 0 | 0 | 8,523,100 | 0 |
| TOTAL BUDGET | | 76,799,849 | 76,114,101 | 89,253,342 | 75,545,200 |

WYTHE COUNTY REQUESTED EXPENDITURE BUDGET FY 2016

| Account | Account Title | Spent FY 13 | Spent FY 14 | Approved FY 15 | Requested FY16 |
|----------------------------------|--------------------------|----------------|----------------|-------------------|-------------------|
| 1101 BOARD OF SUPERVISORS | | | | | |
| 41300 | PART-TIME PAY PERSONNEL | 52,001 | 53,561 | 53,560 | 53,560 |
| 42100 | FICA | 3,377 | 3,414 | 4,097 | 4,097 |
| 42300 | HEALTH INSURANCE | 21,784 | 22,091 | 24,192 | 32,605 |
| 42700 | WORKERS COMPENSATION | 50 | 48 | 52 | 53 |
| 43100 | PROFESSIONAL SERVICES | 93,764 | 49,463 | 8,000 | 50,000 |
| 43600 | ADVERTISING | 8,064 | 9,174 | 10,000 | 10,000 |
| 43880 | CONTINGENCY | | | 10,000 | |
| 45230 | TELECOMMUNICATIONS | 174 | 108 | 1,700 | 500 |
| 45305 | MOTOR VEHICLE INSURANCE | 411 | 379 | 843 | 850 |
| 45307 | PUBLIC OFFICAL INSURANCE | 10,308 | 10,367 | 8,501 | 11,100 |
| 45510 | TRAVEL - MILEAGE | 3,293 | 2,846 | 3,500 | 3,500 |
| 45540 | TRAVEL - CONV & EDUCAT | 4,224 | 4,581 | 4,500 | 4,500 |
| 45640 | PAYMENT - CIVIC ORGAN | 15,899 | 15,363 | 14,500 | 98,900 |
| 45810 | PAYMENT - DUES | 7,038 | 13,852 | 17,000 | 17,000 |
| 46001 | OFFICE SUPPLIES | 218 | 118 | 300 | 300 |
| 46009 | VEHICLE SUPPLIES | 382 | 309 | 750 | 500 |
| 46012 | BOOKS & SUBSCRIPTIONS | 0 | 334 | 200 | 400 |
| 46030 | UNCLASSIFIED SUPPLIES | 4,542 | 6,508 | 7,000 | 5,000 |
| 48202 | FURNITURE & FIXTURES | 29,469 | 0 | | |
| 48210 | BUILDING CONSTRUCTION | | 0 | | |
| | TOTAL | 254,996 | 192,515 | 168,695 | 292,865 |

1101 - BOARD OF SUPERVISORS

| CODE | TITLE | SPENT FY14 | APPROVED FY15 | SPENT DEC14 | REQUESTING FY16 |
|--------------|---------------------------------|----------------|------------------|----------------|--------------------|
| 41300 | Part-Time Pay Personnel | 53,561 | 53,560 | 26,780 | 53,560 |
| 42100 | FICA | 3,414 | 4,097 | 1,668 | 3,336 |
| 42300 | Health Insurance | 22,091 | 24,192 | 13,988 | 27,976 |
| 42700 | Workers Compensation | 48 | 52 | 26 | 52 |
| 43100 | Professional Services | 49,463 | 8,000 | 24,272 | 50,000 |
| 43600 | Advertising | 9,174 | 10,000 | 5,277 | 10,000 |
| 46880 | Contingency | - | 10,000 | - | - |
| 45230 | Telecommunications | 108 | 1,700 | - | 500 |
| 45305 | Motor Vehicle Insurance | 379 | 843 | 843 | 850 |
| 45307 | Public Official Insurance | 10,367 | 8,501 | 11,100 | 11,100 |
| 45510 | Travel - Mileage | 2,846 | 3,500 | 1,277 | 3,500 |
| 45540 | Travel - Convention & Education | 4,581 | 4,500 | 2,709 | 4,500 |
| 45640 | Payment - Civic Organization | 15,363 | 14,500 | 5,957 | 14,500 |
| 45810 | Payment - Dues | 13,852 | 17,000 | 6,757 | 17,000 |
| 46001 | Office Supplies | 118 | 300 | - | 300 |
| 46009 | Vehicle Supplies | 309 | 750 | - | 500 |
| 46012 | Books & Subscriptions | 334 | 400 | 73 | 400 |
| 46030 | Unclassified Supplies | 6,508 | 7,000 | 1,427 | 5,000 |
| 48202 | Furniture & Fixtures | - | - | - | - |
| 48210 | Building Construction | - | - | - | - |
| TOTAL | BOARD OF SUPERVISORS | 192,516 | 168,895 | 102,154 | 203,074 |

SALARY SHEET

| Name | Position | Salary June 30, 2015 | Salary July 1, 2015 | Step | Difference |
|---|-----------------------|-------------------------|------------------------|------|------------|
| Department 1101 - Board of Supervisors | | | | | |
| Houseman, Gary M. | Supervisor District 1 | 7,210.00 | 7,210.00 | N/A | - |
| Hall, Arthur E. | Supervisor District 2 | 8,446.00 | 8,446.00 | N/A | - |
| Willis, Steven T. | Supervisor District 3 | 7,210.00 | 7,210.00 | N/A | - |
| Hale, Joe F. | Supervisor District 4 | 7,210.00 | 7,210.00 | N/A | - |
| McRoberts, Coy L. | Supervisor District 5 | 7,210.00 | 7,210.00 | N/A | - |
| Horney, Jr., B.G. | Supervisor District 6 | 7,210.00 | 7,210.00 | N/A | - |
| Reeves, Sr., Timothy A. | Supervisor At Large | 9,064.00 | 9,064.00 | N/A | - |
| **SUBTOTAL** | | 53,560.00 | 53,560.00 | | - |



919 E. Main Street, Suite 1100
Richmond, Virginia 23219
(804) 648-0835

J. Kenneth Folk
Financial Services Manager

December 19, 2014

MEMORANDUM

To: R. Cellell Dalton, County Administrator, Wythe County, Virginia

From: J. Kenneth Folk 

Re: VML/VACo Fixed Rate Loan Program – Wythe County, VA
\$9,990,000 General Obligation Bond, Series 2014
Closing December 18, 2014
Final Debt Service Schedule

We are pleased to present the final financing schedules related to Wythe County's \$9,990,000 General Obligation Bond, Series 2014, issued through the VML/VACo Fixed Rate Loan Program. We successfully closed on the County's loan on Thursday, December 18, 2014.

The purpose of the Series 2014 Bond is to: 1) refinance the County's variable rate VML/VACo Commercial Paper Loan into a permanent fixed rate loan, and, 2) finance various new money capital improvement projects, including the construction of a school gymnasium, and the Barren Springs water line project. The original purpose of the Commercial Paper Loan, with a current outstanding balance of \$8,025,000, was to finance various construction projects for the County's Schools. Bond proceeds available to the County for its new money projects are \$1,927,000 and have been placed in a restricted account at National Bank of Blacksburg. The County Treasurer is only to disburse funds from the restricted account upon receipt of an invoice for an expense related to the projects approved in the resolution.

National Bank of Blacksburg purchased the County's Bond at closing. The interest rate on the Series 2014 Bond is fixed for fifteen years at 2.36%. The interest rate will reset on August 1, 2029, for the remaining five-year term of the Bond. The interest rate will reset to a rate of interest calculated by adding 0.95% to the Five-Year Treasury Constant Maturity index as published by the Federal Reserve Board from the Treasury market close of business as of the immediately preceding business day prior to August 1, 2029. The rate reset shall not be below 2.36% per annum or exceed 3.47% per annum. The Bond is pre-payable in whole, or in part, at any time, without penalty.

Wythe County, Virginia
December 18, 2014
Page two

As detailed on the attached debt service schedule, interest payments are due semi-annually on February 1 and August 1 each year, commencing February 1, 2015. Principal payments are due annually on August 1, commencing August 1, 2015. The final maturity is August 1, 2034. Please refer to the attached schedules for additional details.

Thank you for your confidence in VML/VACo Finance. We appreciate the County's business and look forward to working with you again in the future.

Attachment

Cc: Steve Mulroy, VML/VACo Finance



**VML/VACO Finance - Fixed Rate Loan Program
Wythe County, Virginia
General Obligation Bond, Series 2014**

**Current Refunding of
Commercial Paper Loan and
New Money Projects**

FINAL

December 18, 2014



VML/VACo Finance - Fixed Rate Loan Program

FINAL

Wythe County, Virginia

General Obligation Bond, Series 2014

Current Refunding of Commercial Paper Loan, and New Money for School Projects and Barren Springs Water Line Project

Financing Terms and Assumptions

| | |
|-------------------------------|--|
| Program | VML/VACo Fixed Rate Loan Program |
| Bank | National Bank <i>(selected through competitive bidding process)</i> |
| Borrower | Wythe County |
| Par Amount | \$9,990,000 |
| Security Pledge | General Obligation |
| Purpose | Current Refunding of County's VML/VACo Commercial Paper ("CP") loan originally issued for school projects, and new money for additional school projects and a Barren Springs water line project |
| Tax-Exempt/Taxable | Tax-Exempt |
| Bank Qualified/Non-BQ | Bank Qualified |
| Interest Rate | 2.36% for 15-years, then with a rate reset for the remaining five years |
| Interest Rate Reset | Effective August 1, 2029, for the remaining term, the Bond shall bear interest at a rate of interest calculated by adding 0.95% to the Five-Year Treasury Constant Maturity index as published by the Federal Reserve Board from the Treasury market close of business as of the immediately preceding business day prior to August 1, 2029. Notwithstanding this calculation, the rate shall not be set below 2.36% per annum nor exceed 3.47% per annum. |
| Principal Payments Due | Annually on August 1, commencing August 1, 2015 |
| Interest Payments Due | Semi-annually, in arrears, on February 1 & August 1 each year, commencing February 1, 2015 |
| Amortization | 20-year amortization with level annual debt service |
| Final Maturity | August 1, 2034 |
| Optional Redemption | Prepayable in whole, or part, at anytime, without penalty. |



VML/VACo Finance - Fixed Rate Loan Program
Wythe County, Virginia
General Obligation Bond, Series 2014
Current Refunding of Commercial Paper Loan, and New Money for
School Projects and Barren Springs Water Line Project

FINAL

Sources & Uses of Funds

Sources of Funds:

VML/VACo Fixed Rate Loan Program, 2014 9,990,000.00

Uses of Funds:

| | |
|--|----------------------------|
| Payoff of Existing CP Loan - Principal | 8,025,000.00 |
| New Money Construction Costs | 1,927,000.00 |
| Costs of Issuance* | <u>38,000.00</u> |
| Total Uses of Funds | <u>9,990,000.00</u> |

* Includes Bond Counsel and Program Closing Costs.



VML/VACO Finance - Fixed Rate Loan Program
Wythe County, Virginia
General Obligation Bond, Series 2014
Current Refunding of Commercial Paper Loan, and New Money for
School Projects and Barren Springs Water Line Project

FINAL

*20-year term;
 15-year rate reset*

Debt Service Schedule

| Fiscal Yr | Coupon Date | Principal Payment | Coupon Rate* | Interest Payment | Periodic Debt Service | Fiscal Debt Service | Outstanding Debt |
|---------------------------------------|--------------------|--------------------------|---------------------|-------------------------|------------------------------|----------------------------|-------------------------|
| 2015 | 12/18/2014 | - | - | - | - | - | 9,990,000.00 |
| | 2/1/2015 | - | - | 28,186.08 | 28,186.08 | 28,186.08 | 9,990,000.00 |
| 2016 | 8/1/2015 | 396,000.00 | 2.36 | 117,988.20 | 513,988.20 | - | 9,594,000.00 |
| | 2/1/2016 | - | - | 113,315.40 | 113,315.40 | 627,303.60 | 9,594,000.00 |
| 2017 | 8/1/2016 | 405,000.00 | 2.36 | 113,315.40 | 516,624.40 | - | 9,189,000.00 |
| | 2/1/2017 | - | - | 108,536.40 | 108,536.40 | 626,851.80 | 9,189,000.00 |
| 2018 | 8/1/2017 | 415,000.00 | 2.36 | 108,536.40 | 523,536.40 | - | 8,774,000.00 |
| | 2/1/2018 | - | - | 103,639.40 | 103,639.40 | 627,175.80 | 8,774,000.00 |
| 2019 | 8/1/2018 | 425,000.00 | 2.36 | 103,639.40 | 528,639.40 | - | 8,349,000.00 |
| | 2/1/2019 | - | - | 98,624.40 | 98,624.40 | 627,263.80 | 8,349,000.00 |
| 2020 | 8/1/2019 | 435,000.00 | 2.36 | 98,624.40 | 533,624.40 | - | 7,914,000.00 |
| | 2/1/2020 | - | - | 93,491.40 | 93,491.40 | 627,115.80 | 7,914,000.00 |
| 2021 | 8/1/2020 | 445,000.00 | 2.36 | 93,491.40 | 538,491.40 | - | 7,469,000.00 |
| | 2/1/2021 | - | - | 88,240.40 | 88,240.40 | 626,731.80 | 7,469,000.00 |
| 2022 | 8/1/2021 | 456,000.00 | 2.36 | 88,240.40 | 544,240.40 | - | 7,013,000.00 |
| | 2/1/2022 | - | - | 82,859.60 | 82,859.60 | 627,100.00 | 7,013,000.00 |
| 2023 | 8/1/2022 | 467,000.00 | 2.36 | 82,859.60 | 549,859.60 | - | 6,546,000.00 |
| | 2/1/2023 | - | - | 77,349.00 | 77,349.00 | 627,208.60 | 6,546,000.00 |
| 2024 | 8/1/2023 | 478,000.00 | 2.36 | 77,349.00 | 555,349.00 | - | 6,068,000.00 |
| | 2/1/2024 | - | - | 71,708.60 | 71,708.60 | 627,057.60 | 6,068,000.00 |
| 2025 | 8/1/2024 | 489,000.00 | 2.36 | 71,708.60 | 560,708.60 | - | 5,579,000.00 |
| | 2/1/2025 | - | - | 65,926.60 | 65,926.60 | 626,635.20 | 5,579,000.00 |
| 2026 | 8/1/2025 | 501,000.00 | 2.36 | 65,926.60 | 566,926.60 | - | 5,078,000.00 |
| | 2/1/2026 | - | - | 60,014.80 | 60,014.80 | 626,941.40 | 5,078,000.00 |
| 2027 | 8/1/2026 | 513,000.00 | 2.36 | 60,014.80 | 573,014.80 | - | 4,565,000.00 |
| | 2/1/2027 | - | - | 53,961.40 | 53,961.40 | 626,976.20 | 4,565,000.00 |
| 2028 | 8/1/2027 | 525,000.00 | 2.36 | 53,961.40 | 578,961.40 | - | 4,040,000.00 |
| | 2/1/2028 | - | - | 47,766.40 | 47,766.40 | 626,727.80 | 4,040,000.00 |
| 2029 | 8/1/2028 | 537,000.00 | 2.36 | 47,766.40 | 584,766.40 | - | 3,503,000.00 |
| | 2/1/2029 | - | - | 41,418.00 | 41,418.00 | 626,184.40 | 3,503,000.00 |
| 2030 | 8/1/2029 | 550,000.00 | 2.36 | 41,418.00 | 591,418.00 | - | 2,953,000.00 |
| | 2/1/2030 | - | - | * | * | * | 2,953,000.00 |
| 2031 | 8/1/2030 | 563,000.00 | * | * | * | - | 2,390,000.00 |
| | 2/1/2031 | - | - | * | * | * | 2,390,000.00 |
| 2032 | 8/1/2031 | 577,000.00 | * | * | * | - | 1,813,000.00 |
| | 2/1/2032 | - | - | * | * | * | 1,813,000.00 |
| 2033 | 8/1/2032 | 590,000.00 | * | * | * | - | 1,223,000.00 |
| | 2/1/2033 | - | - | * | * | * | 1,223,000.00 |
| 2034 | 8/1/2033 | 604,000.00 | * | * | * | - | 619,000.00 |
| | 2/1/2034 | - | - | * | * | * | 619,000.00 |
| 2035 | 8/1/2034 | 619,000.00 | * | * | * | * | - |
| Total Principal | | 9,990,000.00 | | | | | |
| Total Debt Service, Years 1-15 | | | | 2,213,703.60 | 9,396,877.88 | 9,396,877.88 | |

* Rate fixed for 15 years. Rate for last 5 years of loan (years 15-20) to be set on 15th anniversary of loan. See loan documents for details.

**Wythe County Budget for FY 2016
Civic Organizations Requesting Funding**

| | |
|---|------------------------|
| Committee to Advance the TransDominion Express | 250 |
| Downtown Wytheville, Inc. | 5,000 |
| Edith Bolling Wilson Birthplace Foundation and Museum | 10,000 |
| Feeding America Southwest Virginia | 2,500 |
| Healing Place of Southwest Virginia, The | |
| Helping Overcome Poverty's Existence (HOPE) | 22,500 |
| Octagon House Foundation, The | |
| Rural Retreat Wythe County Fair Association | |
| Southwest Virginia Alliance for Manufacturing (SVAM) | 21,850 |
| Southwest Virginia Cultural Heritage Foundation | 10,000 |
| Southwest Virginia EMS Council, Inc. | 3,400 |
| Town of Wytheville Museums | 5,000 |
| Virginia Association of Convention and Visitors Bureaus | |
| Wall of Honor Committee | |
| Wythe Arts Council, Ltd | 10,000 |
| Wytheville Wythe Bland Chamber of Commerce | 3,400 |
| Total Requested | <u>\$93,900</u> |



The Committee to Advance the TransDominion Express

January 8, 2015

Mr. Cellell Dalton
Wythe County
340 South Sixth Street
Wytheville, VA 24382

Dear Cellell,

With each new administration comes a new beginning for transportation. We know this to be true based upon past experiences with all forms whether it is air or rail service or road funding. One thing however, remains to be consistent in central and western Virginia... collaboration to expand passenger rail service to Bristol and beyond! Former Senator Wampler, members of Bristol's City Council and Bristol business leaders were the founders of this vision – a vision that, by working together, we could restore passenger rail service to our communities from Bristol to Lynchburg to Washington, DC and Richmond

For years, the TDX Committee has worked with the VA Department of Rail and Public Transportation to create a dedicated funding stream for current and future passenger rail services in Virginia. The federal Passenger Rail Investment and Improvement Act (PRIIA) threatened the existence of these projects had the General Assembly not acted in this session. Fortunately, Governor McDonnell and the Legislature did pass the necessary legislation to fund Virginia's successful passenger rail system including an extension of service to Roanoke. With your support, the TDX Committee will continue to advocate for expanding service to Bristol and beyond.

Transportation is economic development... and dozens of communities across the US have discovered how passenger rail can stimulate tourism and business economies. The newly-adopted transportation plan in Virginia provides steady funding for our rail services.

Together, we have accomplished much including the phase one of TDX from Lynchburg to DC and the recent announcement of service from Roanoke to Lynchburg. However, our work isn't done and our neighbors further west and south still need our work. We continue to need advocacy and a strong base of supporters so this collaborative committee can work with this new administration to continue the vision that started here more than 15 years ago.

We respectfully request your continued support so we can accomplish our mission. All of our accomplishments are possible because of your involvement and support. We are making a difference and will continue to boldly move forward in the coming year. We ask you to authorize the enclosed invoice to ensure that the effective work of the Committee to Advance the TransDominion Express continues. Please contact us with any questions and comments or if we can assist you in any way.

Sincerely,

Christine Kennedy
TDX Executive Director

Contact Us:
The Committee to Advance the TransDominion Express
c/o Lynchburg Regional Chamber of Commerce
2015 Memorial Avenue • Lynchburg, VA 24501
(434) 845-5966 • Fax (434) 522-9592
www.tdxinfo.org



The Committee to Advance the TransDominion Express

Mr. Cellell Dalton
 Wythe County
 340 South Sixth Street
 Wytheville, VA 24382

Invoice#: 2015-56

| Date | Description | Amount |
|--------|-----------------|----------|
| 1/8/15 | 2015 Investment | \$250.00 |

Keep this portion for your records
 Please return this portion with your payment

Wythe County

Remit to: **Lynchburg Regional Chamber of Commerce**
 2015 Memorial Ave, Lynchburg, VA 24501

Invoice #: 2015-56

For: 2015 Investment

Total enclosed: _____

Check enclosed
 Please charge my credit card Card # _____ Expiration _____
 MasterCard Visa Discover

Name on card _____ Signature _____

Contact Us:
 The Committee to Advance the TransDominion Express
 c/o Lynchburg Regional Chamber of Commerce
 2015 Memorial Avenue • Lynchburg, VA 24501
 (434) 845-5988 • Fax (434) 522-9592
www.tdzinfo.org

Downtown Wytheville

DISCOVER WHAT'S WYTHE IN

150 E Monroe Street, Wytheville, VA 24382 ♦ (276) 223-3343 ♦ www.downtownwytheville.com

Tuesday, March 10, 2015

Tim A. Reeves
Supervisor At-Large
2547 Chapman Rd
Wytheville, VA 24382

Dear Mr. Reeves:

Since its creation in 2013, Downtown Wytheville, Inc. has provided local business owners and Wythe County residents with business development assistance, design guidance, regional tourism promotion and community events targeted at the entire Wytheville, Wythe County region. Downtown Wytheville has supported the efforts of the Town of Wytheville in procuring significant grants for streetscape enhancement, façade improvements and other blight abatement. We also assist the Town of Wytheville with management services for the Downtown Revitalization Grant from DHCD and the Joint Industrial Development Authority with administration of expanded Enterprise Zone management.

Downtown Wytheville constitutes a significant portion of the Wythe County property tax base. The assessed value of privately owned Downtown Wytheville properties totals over \$37.5 million. The net property tax receipts to the County are approximately \$165,000. With increased economic activity in Downtown, the County and Town also stand to see increased sales tax revenues.

Examples of increased revenue generating resources stimulated in part by our efforts are beginning to be felt throughout the region. We have seen significant value investments in Downtown with the recent completion of multimillion dollar renovation of the Bolling Wilson Hotel, the ongoing renovation of the former Leggett Building and the reactivation of the old Crest Building as home to Hannah's Attic. Expansion of this cooperative mercantile establishment focusing on antiques, collectibles and artisan wares is poised to have a substantial impact in total retail sales for the County. Continued renovation of Downtown Wytheville's historic buildings will help to stabilize property values and lead to increased property and sales tax revenues for Town and County budgets.

Since the creation of Downtown Wytheville, Inc. several new businesses have opened in former vacant storefronts. The most significant of those openings is the Bolling Wilson Hotel and its restaurant, Graze on Main. In addition, we have welcomed net total of 13 new businesses to the downtown district, including businesses such as Flourz Sandwiches and Sweets, Sandy's Florists, Dutch Boy Furniture and several other small businesses. Other businesses, such as

Hannah's Attic, have experienced significant growth and expansion. The result of this ongoing business growth will benefit Town and County budgets through increased sales tax revenues.

Downtown Wytheville, Inc. brings a significant investment to the Downtown Wytheville and the Wythe County region in the form of volunteer service hours. Over the past 12 months, Downtown Wytheville volunteers have contributed an estimated 4,300 hours of both professional and standard service hours. Based on median wage estimates for Wythe County, approximately \$100,000 in donated labor has been contributed to promote economic revitalization and promote the Wytheville region.

In view of these accomplishments and the ongoing work to be done, Downtown Wytheville, Inc. does respectfully request budgetary assistance from Wythe County. We are requesting assistance of \$5,000 to be used to help with ongoing operating expenses and special event administration. We feel that the value offered to Wythe County residents through community events and increased tax revenues alone will more than cover the costs of this budget request.

I have attached a summary budget for our organization for the year. The budget before you is subject to change based upon funding levels from the Town of Wytheville, the Wythe Bland Foundation and the success of our fundraising activities. We hope that you will be able to offer full consideration of this budget request and sincerely appreciate all that Wythe County has done to support the revitalization of Downtown Wytheville, which is arguably the heart and soul of not just Wytheville, but all of Wythe County.

Thank you.

Sincerely,

A handwritten signature in black ink that reads "John D. Woods". The signature is written in a cursive, flowing style with a large initial "J" and "W".

John D. Woods
Executive Director

Downtown Wytheville

DISCOVER WHAT'S WYTHE IN

150 E Monroe Street, Wytheville, VA 24382 ♦ (276) 223-3343 ♦ www.downtownwytheville.com

Proposed Budget

| | | |
|--|------------------|------------------|
| Income/Expense | | |
| Town of Wytheville | 65,000.00 | |
| Wythe County | 5,000.00 | |
| Other | | |
| Total Municipal Appropriations | 70,000.00 | 70,000.00 |
| | | |
| Program Sponsorships and Banner Program | 30,000.00 | |
| Wythe Bland Foundation | 6,000.00 | |
| Total Private Income Except Events | 36,000.00 | 36,000.00 |
| | | |
| Promotions Committee Projects | | |
| Events | | |
| Artisan Showcase & Sale | | |
| Event Sponsorships | 250.00 | |
| Events Vendors | 450.00 | |
| Advertising | (400.00) | |
| Supplies | (350.00) | |
| Experience Art Showcase & Sale-Total | (50.00) | (50.00) |
| | | |
| Live Wythe Health Festival | | |
| Wythe Bland Foundation Grant | 6,000.00 | |
| Vendor Tables (Targeting 10 Participants) | 250.00 | |
| Event Sponsors (Targeting 5 Sponsors) | 1,250.00 | |
| In-Kind Contributions of Participating Vendors | 3,750.00 | |
| Music | (1,500.00) | |
| Cooking Show Venue | (450.00) | |
| Food & Supplies for Cooking Demonstration | (1,000.00) | |
| Chef | (500.00) | |
| Porta Potties | (650.00) | |
| Public Address System | (400.00) | |
| Advertising | (1,500.00) | |
| Prizes | (500.00) | |
| Printing and Supplies | (1,000.00) | |
| In-Kind Expenses of Participating Vendors | (3,750.00) | |
| Live Long, Live Well, Live Wythe Festival | 0.00 | 0.00 |

Dickie Boyles 4th of July Cruise-In

| | | |
|-------------------------------|------------|----------|
| Event Sponsorships | 1,000.00 | |
| Events Sales | 2,400.00 | |
| Events Vendors | 1,100.00 | |
| Supplies | (400.00) | |
| Advertising | (600.00) | |
| Porta Potties | (400.00) | |
| Drinks | (1,200.00) | |
| Band | (500.00) | |
| Dickie Boyles Cruise-In-Total | 1,400.00 | 1,400.00 |

Zombie Run

| | | |
|--------------------|----------|----------|
| Event Sponsorships | 500.00 | |
| Events Sales | 1,000.00 | |
| Advertising | 500.00 | |
| T-Shirts | (250.00) | |
| Supplies | (250.00) | |
| Zombie Run-Total | 1,500.00 | 1,500.00 |

Small Business Saturday

| | | |
|-------------------------------|----------|------|
| Event Sponsorships | 500.00 | |
| Prize Donations | 500.00 | |
| Supplies | (250.00) | |
| Prizes | (500.00) | |
| Advertising | (250.00) | |
| Small Business Saturday-Total | 0.00 | 0.00 |

Wytheville Christmas Parade

| | | |
|-----------------------------------|----------|--------|
| Event Sponsorships | 1,500.00 | |
| Advertising | (500.00) | |
| Sound System | (500.00) | |
| Supplies | (400.00) | |
| Wytheville Christmas Parade-Total | 100.00 | 100.00 |

| | |
|---|-------------|
| Program Expenses | |
| Salaries, Wages, Benefits and other Payroll | (61,000.00) |
| General Advertising | (1,500.00) |
| Telecommunications | (600.00) |
| Insurance | (2,500.00) |
| Travel and Conferences | (1,800.00) |
| Dues and Memberships | (1,000.00) |
| Materials and Supplies | (2,050.00) |
| Office Equipment | (1,500.00) |
| Economic Restructuring Committee Projects | (15,000.00) |
| Design Committee Projects | (15,000.00) |
| Organization Committee Projects | (7,000.00) |
| Total Main Street Program | 0.00 |

Edith Bolling Wilson

A First Lady's Birthplace Museum

February 25, 2015

Mrs. Martha Collins
Mr. Bruce Grant
FINANCE DIRECTOR'S OFFICE
WYTHE COUNTY, VIRGINIA
340 South Sixth St.
Wytheville, VA 24382

Dear Mrs. Collins and Mr. Grant:

Please find enclosed the request of the Edith Bolling Wilson Birthplace Foundation & Museum to be included in the Wythe County budget for Fiscal Year 2016. Any questions or requests for information may be directed to me at the phone number or email address given below.

Thank you.

Sincerely,



Sherri E. Case, Director of Development
sherricase@edithbollingwilson.org

The Edith Bolling Wilson Birthplace is a tax-exempt organization under Sections 501(c) 3 of the Internal Revenue Code.

REQUEST OF EDITH BOLLING WILSON BIRTHPLACE FOUNDATION & MUSEUM TO BE INCLUDED IN THE 2016 BUDGET OF WYTHE COUNTY, VIRGINIA

Wythe County is so very fortunate to be the childhood home of a First Lady. The Edith Bolling Wilson Birthplace Foundation & Museum (EBW) is the only birthplace museum of a first lady in the state of Virginia and one of only three throughout the United States. The Foundation's mission includes the preservation, renovation, and development of Mrs. Wilson's birthplace and childhood home for historic, literary, charitable, and educational purposes to benefit visitors to this area while serving the hometown community as well. Through this endeavor, the Foundation will increase awareness of Mrs. Wilson's contributions to the institution of the Presidency and her role as one of the twentieth century's most historically significant women.

One of the EBW's goals is to grow tourism in history-rich Wythe County. The growing number of visitors speaks to the role it can play. Up 25% from 2013, the EBW Museum welcomed 1800 visitors in 2014. Approximately 25% of those visitors were from Virginia counties other than Wythe and almost 40% of them were from out-of-state locations. With the opening of the Bolling Wilson Hotel, visitors to Wythe County can now extend their history oriented visit to include lodging and dining as well. The success of this partnership is already reflected in strong museum visitation during the winter months of 2015.

Another goal is to enrich local cultural consciousness and increase community appreciation of this site's historical value. In 2014, the Foundation and Museum provided educational programs to over 300 students from pre-school age to college students sharing how Mrs. Wilson's childhood in Wytheville prepared her for her significant life as well as sharing what Wytheville was like during the time she lived here. Educational programs also include an active partnership with the Girls Scouts of America who visit the museum to earn the Edith Bolling Wilson Birthplace Girl Scout Patch.

The Foundation is working to create a new program entitled "Inspire to Aspire" which is targeted to young women ages 12 to 18. This program will use the legacy of Mrs. Wilson as a strong woman in her own time, will collaborate with other organizations in the area and develop a program to promote successful, confident young women in our community. We also partner with numerous community organizations on other projects including AGAPE, HOPE, Wytheville Community College, Downtown Wytheville, Inc. and many others.

Another goal achieved by the EBW in 2014 was growing its fundraising base. With successful programs such as the entryway renovation project which brought the Museum into ADA compliance, our number of donors grew 210% from 2013 to 2014. This increase included 25 local businesses who recognized the importance of the EBW's efforts. The museum also partnered with the Bolling Wilson Hotel and Skeeter's in a successful Virginia Tourism Corporation Marketing Leverage Grant which will provide increased marketing opportunities during 2015 and 2016.

Even with those gains, it is a struggle to implement or expand programs and staff the museum. The Foundation employs only one part-time staff person who continues to donate a large number of unpaid hours due to the amount of work required.

The Foundation plans to implement new educational programs and displays focusing on the upcoming 100th anniversary of the US entry into WWI and the 100th anniversary of the marriage of President and Mrs. Wilson. Other plans include educational programs which can be taken to into the schools, making it much easier for a greater number of Wythe County students to learn about this important Wythe Countian and her legacy.

It is such good fortune that this birthplace of a first lady still stands and has not been lost to time or modernization. The building is in stable condition, but in serious need of restoration. In 2013, Preservation Virginia named the Edith Bolling Wilson Birthplace to its Most Endangered Historic Sites list in order to raise awareness of at-risk sites and encourage Virginians to develop reasonable solutions for their preservation. It is the Foundation's goal to renovate and preserve the building so that it can be home to the collection of artifacts, an interpretive space for inter-active exhibits, and a meeting space for educational, cultural and community activities. A planning team has been formed including a professional museum planner, architect and archeologist to make recommendations and proposals regarding renovation. This master plan will be used to pursue grant funds for renovation construction.

Because of its potential for growth and the existing contributions the EBW Foundation and Museum make to countywide tourism and to the local community, the Foundation respectfully requests \$10,000.00 be included in the 2016 Wythe County Budget for the Edith Bolling Wilson Birthplace Foundation & Museum.

Said funds would be used for the following programs:

1. Expand Educational Programs for Wythe County students by creation of a "travelling trunk" or other presentation which could be taken into Wythe County Schools. Expenses would include inter-active travelling exhibits, costuming, audio-visual and hand-out materials and transport expenses.
2. Fund planning study for restoration of the Bolling Home renovations. Expenses would include work of professional museum planner, architect and archeologist in preparing a plan of renovation in order to pursue grants funding construction.
3. Fund programs for young women through the "Inspire to Aspire" program. Expenses would include cost of speakers/facilitators, workshops, mailing and marketing costs, fees for facilities and cost of transportation.
4. Fund the Edith Bolling Wilson Birthplace Museum's participation in a Wythe/Bland/Tazewell County Museum Trail and associated marketing promotion which will be undertaken in partnership with approximately seven other regional museums.
5. Fund general operating expenses which will assure that the EBW Museum is open to the public on a regular and consistent basis.

Should the full amount requested be unavailable, the EBW Foundation will find alternative funding sources or revise proposed programs in accordance with whatever lesser amount is awarded.

Thank you for an opportunity to share the mission and objectives of the Edith Bolling Wilson Birthplace Foundation & Museum. Our organization is excited about the future of this community and we look forward to exploring possibilities of how we can work with the County and be partners in that success.

Respectfully submitted by,

EDITH BOLLING WILSON BIRTHPLACE MUSEUM BOARD OF TRUSTEES

Lisa Alderman

John Bowling

Sherri E. Case

David Davis

Linda DiYorio

Dr. Grace Toney Edwards

Cary Fuller

Deborah Kemper

Charles Lacy

H. Judson Lambert

Dr. John Nemeth

Farron Smith

William Smith

Please contact:

Sherri E. Case

145 E. Main Street

Wytheville, VA 24382

276-223-3484 / 276-620-5030

sherricase@edithbollingwilson.org

| Edith Bolling Wilson Birthplace and Museum 2015 Budget | | JAN 1 to DEC 31 | |
|--|--|-----------------|--------|
| 24 October 2014 for Board Approval | | | |
| | | 2015 | 2015 |
| Income | | Budgeted | Actual |
| Annual Budget | | | |
| | Annual Fund | 30,000 | |
| | Contributions (other) | 500 | |
| | Events (Other) | 10,000 | |
| | Tea | 3,500 | |
| | Sponsorships (General) | 4,000 | |
| | Gift Shop/tours/other sales | 4,500 | |
| | Other | | |
| Special Projects | | | |
| | Sidewalk Brick Contributions | 3,000 | |
| | USDA Grant | | |
| | VTC marketing Grant | | |
| | Wysor Piano Fund | \$18,000 | |
| | Other | | |
| Total Income | | 73,500 | |
| Expenses | | | |
| Annual Budget | | | |
| | Contract Labor-Development | 18,000 | |
| | Contract Labor - Grant Writing | 4,500 | |
| | Contract Labor-other | 7,500 | |
| | Exhibit Expenses | 1,250 | |
| | Utilities | 4,200 | |
| | Bank Service Charges | 450 | |
| | Event Other | 5,000 | |
| | Event Tea | 600 | |
| | Insurance | 2,200 | |
| | Licenses and Permits | 275 | |
| | Marketing and Public Relations | 800 | |
| | Office Supplies | 1,000 | |
| | Annual Fund Mailings | 3,000 | |
| | Copying and Printing | 1,500 | |
| | Volunteer Recognition & Training | 500 | |
| | Stewardship/Promotional Items | 800 | |
| | Gift Shop/tours/other items | 2,000 | |
| | Travel and Meetings | 900 | |
| Expenses | | | |
| Special Projects | | | |
| | Brick Purchases and Installation | \$900 | |
| | Renovation planning | | |
| | USDA Grant: Capital and Technological improvements | | |
| | Piano Restoration | 18,000 | |
| | Other | | |
| Total Expenses | | 73375 | |
| Projected Over / (Under) | | 125 | |



Salem Distribution Center | Administrative Offices | 1025 Electric Road | Salem, VA 24153
P: 540.342.3011 | F: 540.342.0056 | www.faswva.org

Abingdon Distribution Center | 21452 Gravel Lake Road | P.O. Box 2579 | Abingdon, VA 24211
P: 276.628.9266 | F: 276.628.3947

February 23, 2015

Mr. Bruce Grant, Finance Director
attn: Mrs. Martha Collins
Wythe County, Virginia
340 S. Sixth St. - Administration Building
Wytheville, VA 24382-2598

Re: Budget request for Fiscal Year 2016

Dear Mr. Grant,

An estimated 3,300 people in Wythe County are at-risk of hunger. Feeding America Southwest Virginia (FASWVA) supplies food to charitable organizations. In turn, these organizations distribute groceries and serve on-site meals free of charge to people struggling to meet their basic need for food.

Charitable organizations in Wythe County rely on FASWVA. Last year, FASWVA supplied more than 234,000 lbs. of food to organizations in Wythe County. In turn, these organizations distributed groceries to 13,456 households (an average of 1,121 households a month) and served more than 1,951 on-site meals. FASWVA's cost for providing this food last year was \$42,545.

Programs in Wythe County that FASWVA currently supplies with food are:

- Agape Food Pantry
- Austinville Pentecostal Holiness Church
- Fort Chiswell Church of God
- HOPE (Helping Overcome Poverty's Existence)
- Riverview Church of God
- St. Paul Pentecostal Holiness Church
- Speedwell United Methodist Church
- Stoney Fork Community Church
- The Millennium World Outreach

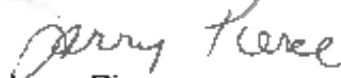
FASWVA is requesting an allocation of funds from the Wythe County Board of Supervisors in for Fiscal Year 2016. This allocation will help FASWVA continue supplying food to programs that feed the hungry. Each \$1 donated helps FASWVA

Fulfilling the Commitment...Feeding the Future

supply \$12 worth of food; for example, \$2,500 donated would help FASWVA supply \$30,000 worth of food ($\$2,500 \times 12 = \$30,000$).

Thank you for considering this important request. Please contact me with any questions at lpierce@faswva.org, (540) 342-3011, ext. 7018.

Sincerely,



Larry Pierce
Grants Administrator

About Feeding America Southwest Virginia

Feeding America Southwest Virginia (FASWVA) is Southwest Virginia's single largest source of food for food-insecure people. FASWVA, a locally operated member of the Feeding America network of food banks, has been fighting hunger and changing lives since 1981. It has the highest rating from Charity Navigator indicating efficiency, sustained service, and commitment to accountability and transparency.

FASWVA supplies food to more than 350 food pantries, soup kitchens, shelters, group homes, rehabilitation facilities, children's programs, sheltered workshops and nutrition programs for the elderly. In turn, these programs, located in 26 counties and their associated municipalities, distribute groceries and serve on-site meals directly to needy people.

Many elderly and disabled people, children, the unemployed, and working poor families need help. Of the households served by FASWVA:

- 83% choose between paying for food and utilities
- 85% have incomes of \$20,000 or less
- 89% purchase inexpensive, unhealthy food

Hungry people receive food free of charge. Acquiring, storing, tracking and transporting food for hungry people, however, involves operational expenses such as trucks, warehouses, staffing, supplies and equipment.

FASWVA is blessed to have wonderful partnerships in the community. Food donors and financial donors are vital. Also, more than 6,100 volunteers contributed more than 32,000 hours of service last year. These partnerships enable FASWVA to accomplish its mission of feeding the hungry.



The Healing Place of Southwestern Virginia
201 Federal Street
Lynchburg, VA 24504
434.847.3093
Email: office@thehealingplace-sv.org

December 12, 2014

Dear Mr. Dalton:

Today a young woman with a 4 year-old son and a 10 year opiate addiction is making the most of a chance to recover and heal from her disease at The Healing Place in Raleigh, NC. Our first referral, she entered the program in June following detoxification in Galax, VA, and is making excellent progress. We believe hers is the first of many inspiring stories which will result from our work.

According to data collected in annual government surveys, each year more than 500,000 people in Virginia need treatment in a specialty facility for substance use disorders (SUDs), but do not receive it. The main reasons are lack of insurance and/or the money to pay for treatment.

For the past 5 years our nonprofit called The Haven has worked to develop The Healing Place of Southwestern Virginia (THPSV). Begun more than 20 years ago in Louisville, KY and successfully replicated in Richmond and Raleigh, The Healing Place program provides an opportunity for individuals who suffer from the disease of addiction to get help. There is no monetary cost to the program participant and no waiting list, both of which are major obstacles to participation.

Last year we obtained a corporate charter for THPSV. This year we filed for tax exempt status with the IRS, and were approved in September. Last month we registered with the state as a charitable organization. Contact the Department of Agriculture and Consumer Services for our financial data.

In March of this year we expanded our Service Area. It now covers 60% of the state and includes 25% of its population. Also in March we launched a website for our new nonprofit at: "thehealingplace-sv.org". We invite you to explore it and learn more about our work.

We're currently working to create awareness of THPSV throughout our Service Area, and on identifying operational funding sources. In May we mailed letters and follow-up emails to government officials in our 16 cities, 48 counties and 101 towns. We also have begun an awareness effort to reach all localities through our 11 Planning Districts and their Local Government Councils.

Some of our operating funds will come from giving the court system an option of using THPSV as an alternative to incarceration for those convicted of minor drug and alcohol offenses. In FY 2013 the average cost for a day in jail in our Service Area was \$61. The average cost for a day at THPSV will be \$30. THPSV will save our state and localities money; more importantly, it will save lives!

We're excited and humbled by the progress we have made, and believe it's only due to God's guidance and your prayers and financial contributions. Thank you for your past support. To sustain our work in 2015, please consider making a gift to The Healing Place of Southwestern Virginia.

Gratefully,

Vince Sawyer
President

PS: Donations can be made on our website using a credit card and/or PayPal account!



Helping Overcome Poverty's Existence, Inc.

(formerly Mountain Shelter, Inc.)

P.O. Box 743, 680 W. Main Street, Wytheville, VA 24382

Toll Free: (877) 818-8680 Phone: (276) 228-6280 Fax: (276) 228-0508

Web site: www.wythehope.org

Board of Directors

February 27, 2015

Rachel Jones
Chair

Ms. Martha Collins, Administrative Assistant
340 S. Sixth Street
Wytheville, Va. 24382

Drew Laing
Vice-chair

Treva Adams
Secretary

Misty Pack
Treasurer

Harvey Atkinson

Bob Ballard

Lynne Bouknight

Miracle Carner

Tony Isom

Mike Jennings

Lewis LaFon

Kimeco Addison

Bruce Stephens

Dear Ms. Collins,

Please accept this proposal from HOPE, Inc. for funding of \$22,500 from the Wythe County Board of Supervisors for FY 2016. In the past, HOPE has requested reimbursement for property taxes paid on our HOPE Ministry Center office. Since closing on the acquisition of the building last June, the property is now exempted from real estate taxes. This proposal represents the first time HOPE has requested direct funding from the county for specific program areas.

The first line item requests \$15,000 for a fund to do discretionary home repairs for Wythe residents in owner-occupied housing. These funds may be used to leverage USDA RD 504 grant funds for repairs for elderly, as the maximum allowed by the 504 program is \$7,500 per home. This fund would also be available to assist with tap fees, utility installation or septic repairs for low income households, as well as installation of underpinning. This assistance would be offered as a no-interest loan, secured by a promissory note, with the repayment amount based on ability to pay. Repayments would be revolved back into the fund for future lending. While minimal, this kind of housing assistance is greatly needed in the county and this would be a great start to repairing some of the worst-case housing in Wythe. It is anticipated that this amount would assist 3-6 households in the first year.

The second request is for \$2,500 to assist in the marketing of HOPE's annual fundraiser, the Big Pencil to Big Walker Charity Ride. This year's event, on June 20 (prior to the adoption of a budget for FY 16) is our 12th annual ride, with a route going from Wytheville over Big Walker Mountain and back. We have averaged 75 participants, with the largest turnout of 175, and the majority of riders coming from beyond Wythe County. Performance events such as this put the county's assets on the map, and we have greatly appreciated the sponsor support from VHDA, Gatorade, Wytheville Office Supply, among other local businesses. With sponsor support from the County, we would be able to place the county logo or contact information on the website (www.bigwalkercharityride.com), Main Street banner, road signs and cycling shirts.

Our final request is for \$5,000 in general operating support. These are the hardest funds to secure by any non profit, and are requested by most of the state and federal grants received by HOPE. Among the programs administered by HOPE requiring local match are the annual Virginia Housing Solutions Program from Virginia Department of Housing and Community

*Serving the counties
of Bland, Wythe,
Smyth, Carroll and
Grayson and the
City of Galax.*

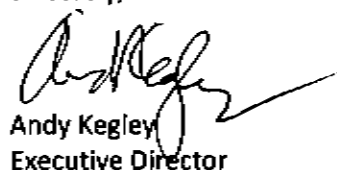


Andy Kegley
Executive Director
akegley@wythehope.org

Development, for which we receive \$307,000 to help with homeless prevention and rapid re-housing; the federal US HUD Continuum of Care Permanent Supportive Housing grant of \$159,000; and the US HUD/VHDA Housing Counseling grants of \$36,000 for housing counseling support. Showing local government financial support is invaluable in leveraging these and other grant opportunities to better the quality of life for Wythe County residents.

I am happy to provide any additional information which the Board may request on our work, and appreciate the opportunity to make this request. I look forward to sharing with the Board the work underway here at HOPE, from our single family housing developments to crisis assistance, to food security and alternatives to pay day lending—there is much to celebrate and support.

Sincerely,



Andy Kegley
Executive Director

The Octagon House Foundation

Preserving History & Reinvesting in our Future

P. O. Box 1701 + Marion, VA 24354 + 276-783-3723

November 2014

Dear Friends,

Uncontrolled development, urban sprawl, and neglect have become an increasing threat to historic landmarks in every area of the nation. Sadly, historic homes, landmark buildings, sacred battlefields and other important sites are demolished every day for shopping centers, parking lots and housing.

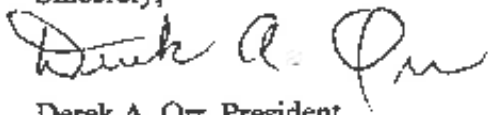
The Abijah Thomas House in Smyth County is no exception. According to the National Register of Historic Places, the home is a rare expression of octagonal domestic architecture that caught the imagination of the Americans in the great reform ferment of the 1850s. The Thomas House, an eight-sided dwelling, was the most sophisticated example in Virginia. Unfortunately, this unique structure has been neglected nearly to the point of ruin.

A group of volunteers have formed the Octagon House Foundation to save and restore this once beautiful and extraordinary home near the South Fork of the Holston River. As a membership-based association, we are dependent upon membership fees, other financial donations and volunteers to complete this project. The foundation is a non-profit organization and donations are tax-deductible.

Although large grants will be sought from different sources, the likelihood of receiving them is enhanced by the good showing of local support.

Please join in helping save this historic structure.

Sincerely,



Derek A. Orr, President

Please help restore the Octagon House. Your donation will contribute greatly to the renovation and preservation of this historic Smyth County home. The Octagon House Foundation is a federally registered 501(c)(3) organization and donations are tax-deductible.

Although large grants are being sought from different sources, the likelihood of receiving them is enhanced by a good showing of local support. Please help the foundation achieve its goals.

Charter Membership

- Individual..... \$50
- Family..... \$80
- Business..... \$100
- Preservationist Circle..... \$250
- Abijah-Priscilla Circle..... \$500
- Silver Circle..... \$1000
- Octagon House Gold Society. \$5000
- Other monetary donation \$ _____
 - In memory of _____
 - In honor of _____

Annual Membership

- Individual \$15
- Family \$25
- Business \$50

 your name

 address

 town, state, zip code

 phone

 email

Please enclose check or money order and send to:

**The Octagon House Foundation
 P.O. Box 1701
 Marion, VA 24354**

Phone: (276) 783-3723
 Email: daorr15955@earthlink.net



Abijah Thomas was born in 1814 and married Priscilla Scott in 1838. Thomas' land holdings included more than 10,000 acres and laid the foundation of an iron industry—developing mines, furnaces, and foundries. He built a saw mill, a burr mill, and finally, a

woolen mill for which he bought excellent equipment and brought in expert labor. On the eve of the Civil War, Thomas was a wealthy man. If the Civil War had not destroyed his properties and involved him heavily, he would in all probability have amassed one of the great fortunes of the state and have set his county 50 years ahead in industrial development.



A staircase in its current condition in the Octagon House

The Octagon House Foundation

*Preserving History,
 Reinvesting In Our Community*



Just before the American Civil War, the wealthy industrialist, Abijah Thomas, built the octagonally shaped house that still stands near the center of Smyth County, Virginia. Although most of the walls are structurally sound, everything else is currently in great need of restoration.



The Octagon House Foundation, a non-profit corporation, has been formed to coordinate the help of volunteers to restore this historical treasure and return it to use by the surrounding communities.

Assistance is needed, sought and greatly appreciated.

WHO WE ARE

The Octagon House Foundation is a 501(c)(3) non-profit corporation formed to save and restore the Octagon House that was built in Smyth County, Virginia by Abijah Thomas in 1856-57. We are supported by membership dues and by the work of volunteers who contribute their time and skills to achieve the foundation's goals.

The Thomas house as described in Mack Howard Sturgill's 1980 National Register application:

Commanding a panoramic view of the South Fork country of the Holston River in Smyth County, the Abijah Thomas House is a rare expression in Virginia of the concept of octagonal domestic architecture that caught the imagination of Americans in the great reform ferment of the 1850s. The originator of the concept, Orson S. Fowler, introduced readers to the functional, stylistic, and humanitarian advantages of an eight-sided dwelling through successive editions of his book, A Home for All. More than a thousand buildings were constructed in the United States emulating Fowler's ideas. The Thomas House is Virginia's most sophisticated example. Built in 1856-57 by Smyth County's foremost antebellum industrialist, Abijah Thomas, the distinctive brick structure retains a notable variety of grained and marbled baseboards, as well as a rare marbled plaster wall. With its unusual design, once-beautiful interior decoration, and mountain view, the residence is symbolic of the rise to prominence of a pioneer family of southwestern Virginia in the years just prior to the Civil War. — Goodrich Wilson

OUR GOALS

The goals of The Octagon House Foundation are to preserve what remains of the original Thomas house and restore it as it was when Abijah Thomas' family lived there in the late 1800's. The home may then be used by the community for educational and cultural purposes.

HOW YOU CAN HELP

As a membership-based, non-profit organization, we are dependent upon membership fees, other financial donations and the time of volunteers. We encourage you to get involved any way you can.

Make a Donation

All you donate goes solely to save this historic landmark. Your donations are tax deductible.

Volunteer

Contact the foundation to see what kind of volunteer work is currently needed and to tell us your special skills so you can be called upon when needed. Current needs include help with promotions, events, preservation work and fund raising.

The Octagon House Foundation

P.O. Box 1701

Marion, VA 24354

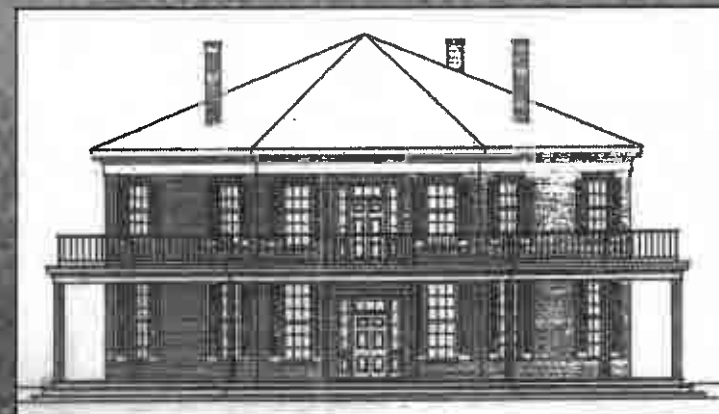
Phone: (276) 783-3723

Email: darr15955@earthlink.net

VIEW FROM THE PAST



VISION FOR THE FUTURE



Virginia Landmark Register • National Register of Historic Places • Listed in 1980

Rural Retreat - Wythe County Fair Association
PO Box 59
Rural Retreat, VA 24368

December 31, 2014

The Rural Retreat Fair Association is a Non-Profit Organization that receives no federal or local funding. All funding is a direct result of proceeds from the annual fair in August, facility rental income and private donations.

The cost to maintain fairground operations is around \$13,00 annually. The majority of expenses are driven by utility costs and insurance coverage for our facility. The past 4 years our revenue has decreased substantially due to rain and storms the week of the fair impacting attendance drastically. The combined cost of the fair, facility operating expenses and lost revenue has put us in a great need for funding.

Funding for the Rural Retreat Fairgrounds is an immediate issue. As residents of Wythe County, we must face the realization of this very serious financial shortfall. We are asking for your support to secure the future of the Rural Retreat Fairgrounds for the next generation.

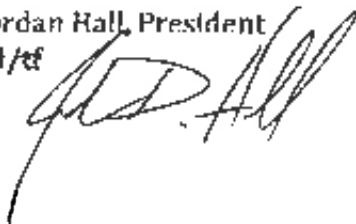
Our Fair is rich in tradition for so many families in Wythe County and needs your support now to continue this legacy for future generations. Simply put, we are asking you to generously join us in addressing the need and supporting this solution. Funds will be used for debt reduction, capital improvement and day to day operating expenses. This will allow Rural Retreat Fairgrounds to continue in community service programs and continued improvements to attract individuals, businesses, organizations and events to the Rural Retreat Fairgrounds.

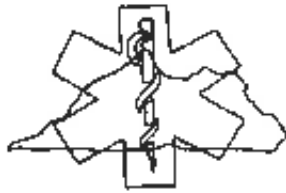
Your help in keeping our organization going is crucial to our future. Thank you for your consideration.

Sincerely,

Jordan Hall, President

JH/ef





Southwest Virginia
Emergency Medical Services Council, Inc.

306 Piedmont Avenue • Bristol, Virginia 24201 • (276) 628-4151

January 30, 2015

Wythe County
Attn: Celledl Dalton, County Administrator
340 South Sixth Street
Wytheville, VA 24382

Dear Mr. Dalton:

As you know, the Southwest Virginia EMS Council is a regional non-profit organization designated by the Virginia Board of Health to serve as the region's emergency medical services council. For more than 30 years, the Southwest Virginia EMS Council has been committed to our mission to reduce death and disability in Southwest Virginia arising from illness and injury by providing a wide range of technical assistance, support, training, and planning services to enhance the region's emergency medical services system.

While it would be impossible to outline all of the many ways we serve the region, we have emerged as a vital resource for our regional EMS agencies. Through our EMS grant assistance services, many EMS agencies have obtained funding for needed equipment and supplies. We have worked with our region's medical directors to establish performance improvement criteria, create patient destination plans, and develop patient care protocols adhering to the highest standards of care. Our organization is committed to helping EMS providers maintain the highest level of patient care through ongoing training opportunities. **In FY2015, the Council has offered free continuing education programs throughout the region that provided the required hours of training for any provider, from basic life support to Paramedic, to renew their state certification AT NO CHARGE.** We brought two Designated Infection Control Officer courses to meet state regulatory requirements. **In FY2015, we achieved accreditation as the region's only free-standing EMT-Intermediate training program.** This increases access to advanced life support certification training for EMS providers in our region. As an AHA Training Center, we have supported cardiac survival by increasing the availability of CPR in our communities. The Council also coordinated the organization of a regional EMS Taskforce to effectively respond to and assist with disasters throughout the region and beyond.

Thank you for your financial support during FY2015 in the amount of \$3400. You share in our success, as we could not continue to operate without your help. We are asking for your continued financial support in an equal amount of \$3400 for FY2015. This will insure that we are able to continue to serve the region's heroes with the services and support necessary to save lives. On behalf of our Board of Directors I thank you for your continued support.

Sincerely,

Gregory Woods, MHA
Executive Director

MISSION AND BACKGROUND

The Southwest Virginia EMS Council, Inc., is a regional nonprofit organization serving the emergency medical services agencies and providers throughout southwest Virginia. Our organizational mission is to evaluate the needs of the EMS community and to provide the services necessary to reduce morbidity and mortality in southwest Virginia arising from emergent illness or traumatic injury through facilitation, coordination, and planning of a comprehensive EMS system.

Our vision is to constantly elevate the quality of prehospital care and EMS response throughout southwest Virginia. This is the basis for our ongoing and expanding scope of services within this region.

We are the only Regional EMS Council designated by the Virginia Department of Health to serve southwest Virginia, and our service area includes sixteen jurisdictions. As the only regional EMS council, our services are unique and essential to prehospital patient care.

SERVICES AND PROGRAMS

EMS System Planning and Coordination

The Council is the lead agent in coordination and planning of the regional EMS system. The Council has established and coordinates regional committees consisting of various EMS stakeholder groups including healthcare facilities, emergency planners, emergency physicians, and EMS providers to develop regional plans and protocols that impact patient care. These include:

- Ebola Planning and Guidance
- EMS Strategic Plan
- Mass Casualty Incident/Weapons of Mass Destruction Plan
- Trauma Triage Plan
- Hospital Diversion Plan
- Performance Improvement Plan and Template
- Stroke Triage Plan
- Patient Care Protocols

These plans, along with the regional patient care protocols developed by our organization, provide the regional patient care and destination guidelines used by most EMS agencies in the region. This establishes the standard of patient care regionally. These protocols are reviewed annually and revised as needed to ensure the health and safety of the citizens we serve. Likewise, our Performance Improvement plan and template assist EMS agencies in reviewing past calls for the purpose of continual patient care improvement and helps EMS agencies maintain compliance with related state regulations.

In FY2015, the Council coordinated a regional EMS Taskforce, Southwest 17, to respond to disasters throughout the region and state and lend operational support. Southwest 17 includes EMS agencies from throughout the region, and support of the team is administered through the Council.

Regional EMS Testing

The Council provides all regional EMS testing at all certification levels. We are the only entity approved to coordinate testing of First Responder and EMT-B candidates through our designation by the state. Our testing program is the entry-level means by which new EMS providers begin their careers.

We also provide a complete spectrum of advanced life support testing within the region. While this is not required by the state, we feel that it is important to ensure testing opportunities locally so EMS providers who are upgrading their certification level do not have to travel to complete the testing process.

Testing locations are spread throughout the region to accommodate EMS candidates from throughout the region. In calendar year 2014, we coordinated **17 test sites and tested 309 EMS candidates.**

EMS Training and Education

Over the past several years, the Council has functioned as the leading provider of open-enrollment continuing education training in the entire region. This robust educational program has been expanded over the years to meet the educational needs of EMS providers throughout the region in order to promote EMS provider retention and reduce costs. In FY2013 we added new services to better meet the growing educational needs of EMS providers and to limit costs for such programs typically borne by providers, agencies or local governments. Benefits of our regional educational program include:

- Continuing education programs for ALS and BLS providers offered at no cost
- In FY2014, BLS and ALS providers at all levels could complete required hours **for free**
- **More than 1600 hours of continuing education training (145 courses)** offered to ensure that EMS providers have the training needed to adequately care for patients and to maintain certification
- **More than 234 hours of certification training** offered to help recruit new EMS providers or upgrade capabilities
 - Programs are spread throughout the region to minimize travel times and promote attendance, and we can schedule additional programs to meet specific local needs
 - Annual educational needs surveys are distributed to EMS agencies to assist with scheduling
 - Included both EMT-Basic and EMT-Enhanced certification courses
- Operation as an American Heart Association Training Center to promote fast processing of paperwork and alleviate instructor shortages
 - Offered **475 CPR/First Aid Courses**
 - Conducted **1,900 hours of CPR/First Aid Training**
 - Issued more than **2100 certification cards** for CPR/First Aid
 - Offered **90 advanced AHA courses**
 - Conducted **1400 hours of advanced AHA courses**
 - Issued more than **350 certification cards** for advanced programs
- Instructor oversight, approval, and support through policy development

Southwest Virginia EMS Council, Inc.
Budget Request Supplemental Information
FY 2016

- All courses are approved by the Virginia Department of Health Office of Emergency Medical Services and approved to provide continuing education credit
- Loan program for educational equipment and training videos to support EMS education throughout the region

In FY2015, the Council received accreditation as an EMT-Intermediate training site. This makes us the first accredited training program in the region for advanced life support certification training outside of the community college system. Application was made to obtain accreditation due to requests from EMS providers and local government leaders to provide a non-college option to continue EMS education. This will attract EMS providers who are willing to upgrade their certification level but who are not willing to attend college to do so.

Our organization continually assesses the educational needs of our EMS agencies, providers, and communities. New programs, including the Designated Infection Control Officer Training, were introduced in FY2015, and we have new course offerings planned for FY2016.

Other Services

The Council offers a wide range of services to assist EMS agencies and providers. While it would be impossible to list every way that we support our region's heroes, there are some notable services that are uniquely provided by our organization including:

- Coordination of the regional Critical Incident Stress Management Team
 - Providing critical incident debriefings and defusing at no cost with 24/7 availability
- Rescue Squad Assistance Fund Grant Program assistance and advocacy
 - Assist in completion of RSAF grant applications
 - Provide regional review meetings
 - Advocate at state meetings
- EMS Lending Library
- AHA Training Center (previously mentioned)
- Regional EMS system information and referral
- Support the Southwest Virginia Paramedic Program through administration of the Tuition Assistance Program and permanent loan of EMS training equipment
- Assisted EMS agencies in obtaining more than \$1,000,000 in needed equipment.

A unique program offered by our organization is our robust emergency cardiovascular care program. This is made possible through our contract as an American Heart Association Training Center. While the contract with AHA provides no monetary reimbursement, it does require ongoing monitoring and strict adherence to AHA standards. This program is essential to ensure that EMS providers maintain current CPR, Advanced Cardiac Life Support, and Pediatric Advanced Life Support credentials. Through our network of instructors, we are also able to provide CPR training for other community groups and individuals, thus improving the chance of survival from cardiac arrest. In 2014, the Council supported **110 AHA instructors from throughout our region, taught 688 AHA courses, and issued 2,450 certification cards**. We also maintain the region's only free lending library of CPR Training Equipment (videos and manikins) which are maintained by the Council. This program serves not only our own affiliated instructors but also healthcare facilities, educational institutions, and instructors aligned with other healthcare facilities.

A document highlighting some of the services uniquely offered by our organization has been included to provide additional information about those programs.

DESIGNATION

The Council is one of eleven regional emergency medical services councils currently designated by the Department of Health to develop and implement an efficient and effective regional emergency medical services delivery system in accordance with the Code of Virginia § 32.1-111.11. We are the only designated regional EMS council serving southwest Virginia. The Council contracts with the Virginia Department of Health to plan and coordinate various components of the EMS delivery system which accounts for the majority of our annual operating budget. The Code of Virginia requires that designated EMS councils match state funds with local funds at a proportion specified in the regulations of the Board, currently 25%.

FINANCIAL OUTLOOK

Recent state budget reduction planning processes have resulted in a transfer of funds from the state "4 for Life" Fund to other budget areas. The "4 for Life" Fund is the state fund that finances essential components of emergency medical services throughout the region including regional EMS Councils. This fund has been targeted through state budget reduction planning, which could directly impact EMS on many levels.

The Council annually receives financial support from all local governments within our service area; however, our matching fund rate is around 15% from all sources (including several charitable organizations) which is below the 25% matching requirements expected by the state. It is essential that we maintain and improve our current matching level.

The Council is more dependent on support from our local governments now than ever before. The regional EMS system would suffer if any of these core services was lost. While these times are uncertain, the provision of high-quality EMS service remains essential to our communities. The Council is uniquely positioned to insure that training and EMS planning activities continue and can work with your locality to meet your unique EMS needs to insure continuity of service and maximum the impact of your funding dollars in these areas.

REQUEST AMOUNT AND EXPLANATION

Despite the expansion of our program offerings to better serve the needs of EMS agencies and providers, the Southwest Virginia EMS Council is requesting equal funding from Wythe County for the 2015 fiscal year in the amount of \$3400. This will help us meet matching funding requirements and be used to support our operational expenses. While our services specifically involve EMS providers and stakeholders, the impact of our work affects every citizen who will potentially use the regional EMS system. Because of our unique and critical services, your support is a wonderful investment in the health and safety of every citizen in our region, and we could not continue to provide the level of service that is needed in Southwest Virginia.



Southwest Virginia EMS Council, Inc.



The Southwest Virginia EMS Council, Inc., incorporated in 1981, is a 501 (c) 3 non-profit organization providing support services to EMS agencies throughout the Southwest region of Virginia. It is one of 11 regional EMS councils serving the citizens of Virginia. The organization serves the thirteen counties and three cities that comprise Virginia planning districts 1, 2, and 3. The organization currently serves nearly 100 EMS agencies, 1,700 EMS providers, and all other EMS stakeholder groups (including EMS physicians, local governments, and hospitals). Specific services offered by the Council are described below:



Regional EMS Planning and Coordination

SWVAEMS is responsible for coordinating and planning all aspects of the regional EMS system including: regional patient care protocols, response plans (including hospital diversion, mass casualty incidents, and trauma triage), regional medication exchange and supplies restocking programs, medical direction, and EMS & Trauma Performance Improvement.



EMS Training

SWVAEMS offers a yearly schedule of courses aimed to help EMS practitioners continually maintain and upgrade their patient-treatment skills. Courses are offered to any EMS provider, nurse, physician, or other healthcare provider who wishes to attend. Many of these programs are offered free of charge to EMS providers. Program offerings include ACLS, PALS, ITLS, Pediatric ITLS, PHTLS, and neonatal resuscitation. The Council can set up specific training for interested agencies and can help organizations find instructors for these and other programs (such as CPR).



EMS Testing

The Council is the only regional provider of EMS testing (initial and recertification) for EMTs. Any individual completing certification testing in the region to become an EMT or needing to maintain their certification through testing does so through programs offered by the Council. A test schedule is available on our company website.



EMS Grants

SWVAEMS assists volunteer EMS agencies, schools, localities, and other EMS stakeholders in obtaining resources needed to improve prehospital patient care through grant writing workshops and one-on-one grant writing assistance. SWVAEMS supports regional agencies who have submitted applications to the Rescue Squad Assistance Fund Grant Program by attending state grant review meetings, speaking on behalf of those agencies, and by providing supporting information for grant requests.



Training Equipment Lending Library

Our Lending Library consists of audio-visual resources that can be used for educational purposes including completion of state Continuing Education requirements. The Library also contains a variety of EMS training equipment including manikins, defibrillators, instructor resources, and patient-care devices. Although primarily utilized by EMS agencies and instructors, materials may be used by community partners including area hospitals and schools free of charge by setting up an account through the Council office.



Information, Referral, and Technical Assistance

A point of contact is available for any EMS stakeholder needing advice on EMS regulations, continuing education, patient care, or any other EMS-related issue. If unable to assist, the Council can refer callers or visitors to the appropriate office for assistance. Regular business hours are Monday through Friday, from 9:00 a.m. until 5:00 p.m.



Critical Incident Stress Management

The Southwest Virginia CISM team supports the efforts of our region's emergency responders by providing critical incident stress management services and training to all providers including fire, rescue, police, emergency room personnel, and others who may become traumatized in their efforts to provide care for people in their community.



Community Training Center

The Council serves as an authorized provider for CPR, First Aid, and advanced cardiovascular care courses. As a community training center, we serve nearly 120 instructors from throughout the region, conduct 400 classes, and issue nearly 2,500 AHA program completion cards annually.

Additional services are offered to EMS stakeholders based on specific needs. The Council exists to strengthen the regional EMS system. Please contact the Council office to discuss ways we can assist you with any matter related to emergency medical services.

Our Vision:

To constantly elevate the quality of prehospital care and EMS response throughout southwest Virginia.

Our Mission:

To evaluate the needs of the EMS community and to provide the services necessary to reduce morbidity and mortality in southwest Virginia arising from emergent illness or traumatic injury through facilitation, coordination, and planning of a comprehensive EMS system.

Southwest Virginia EMS Council
306 Piedmont Avenue
Bristol, Virginia 24201
Phone: (276) 628-4151
Fax: (276) 644-4005
Email: southwest@vaems.org
Website: www.southwest.vaems.org