

Commonwealth of Virginia
SAMPLE BALLOT
 County of Wythe
 General and Special Elections
 Tuesday, November 3, 2020

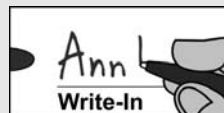
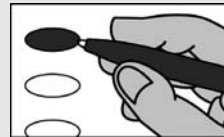
Instructions

To vote for a candidate, use a black ballpoint pen to fill in the oval next to the name.

To vote for a candidate who is not on the ballot, fill in the oval next to the "Write-in" line and print that person's name clearly on the line.

To vote on a question, fill in the oval next to Yes or No.

If you want to change a vote or have made a mistake, ask an election official for another ballot. Do not make marks other than filling the oval.



President and Vice President

Vote for only one

- DEMOCRATIC PARTY**
Electors For
Joseph R. Biden, President
Kamala D. Harris, Vice President
- REPUBLICAN PARTY**
Electors For
Donald J. Trump, President
Michael R. Pence, Vice President
- LIBERTARIAN PARTY**
Electors For
Jo Jorgensen, President
Jeremy F. "Spike" Cohen, Vice President

Write-in

**Member
United States Senate**

Vote for only one

- Mark R. Warner - D**
- Daniel M. Gade - R**

Write-in

**Member
House Of Representatives
9th District**

Vote for only one

- H. Morgan Griffith - R**

Write-in

Constitutional Amendment #1

Should the Constitution of Virginia be amended to establish a redistricting commission, consisting of eight members of the General Assembly and eight citizens of the Commonwealth, that is responsible for drawing the congressional and state legislative districts that will be subsequently voted on, but not changed by, the General Assembly and enacted without the Governor's involvement and to give the responsibility of drawing districts to the Supreme Court of Virginia if the redistricting commission fails to draw districts or the General Assembly fails to enact districts by certain deadlines?

- Yes**
- No**

Constitutional Amendment #2

Should an automobile or pickup truck that is owned and used primarily by or for a veteran of the United States armed forces or the Virginia National Guard who has a one hundred percent service-connected, permanent, and total disability be free from state and local taxation?

- Yes**
- No**

**Authorized by Electoral Board of the
County of Wythe**
245 S. 4th. Street, Wytheville, VA. 24382-2598

The authority statement printed above must be removed and replaced with the appropriate authority statement for the candidate, committee, individual or group using this ballot for their own purposes. The authority statement used for this ballot must comply with the requirements of either federal or state law, as appropriate. For state requirements, see §24.2-955 et seq. of the *Code of Virginia*. For federal requirements, call the Federal Election Commission, 1-800-424-9530.

SAMPLE